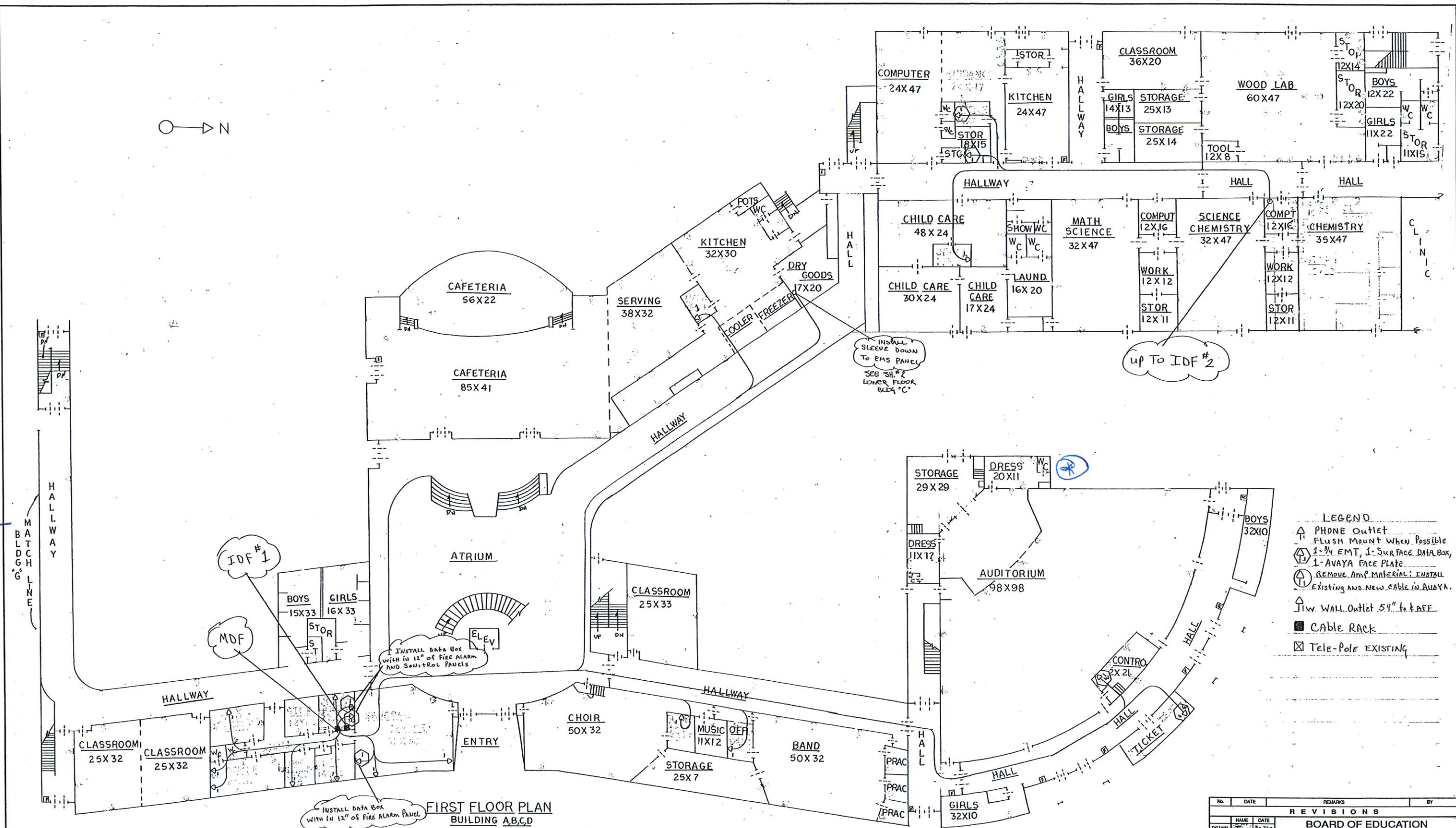
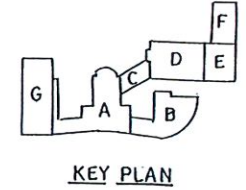


GYM

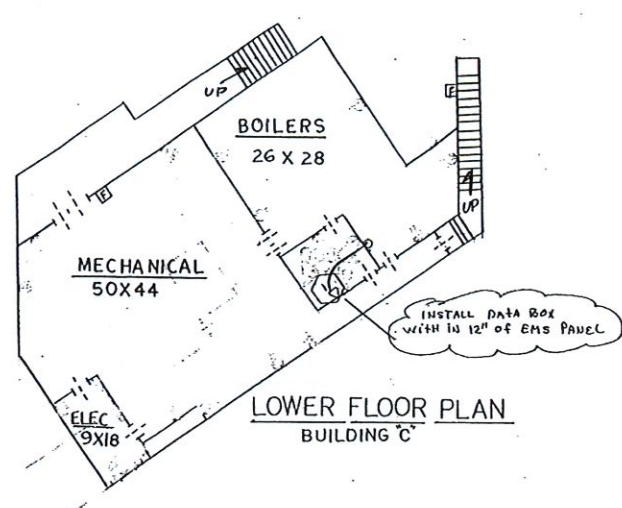
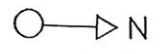


PLATE/ACRYLIC
GLASS

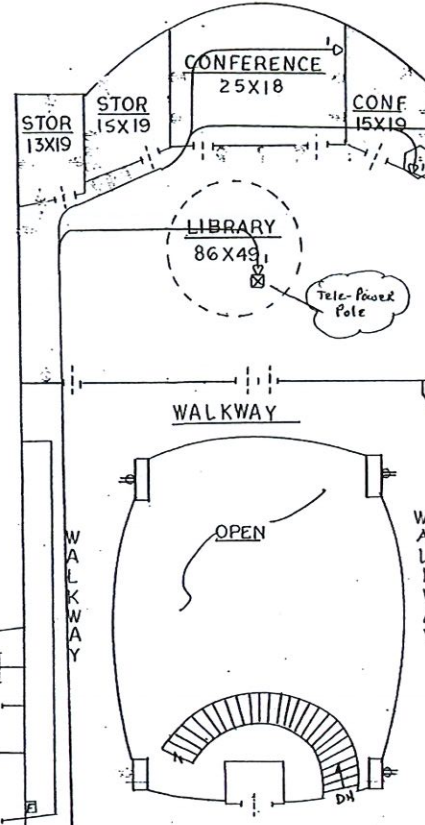


- LEGEND**
- △ PHONE OUTLET
 - △ FLUSH MOUNT WHEN POSSIBLE
 - △ 2-3/4 EMT, 1- SURFACE DATA BOX, 1- AVAYA FACE PLATE
 - ⊖ REMOVE AMP MATERIAL; INSTALL EXISTING AND NEW CABLE IN AVAYA.
 - △ 1/2 WALL OUTLET 5' TO E.A.F.E.
 - CABLE RACK
 - ⊗ TELE-POLE EXISTING

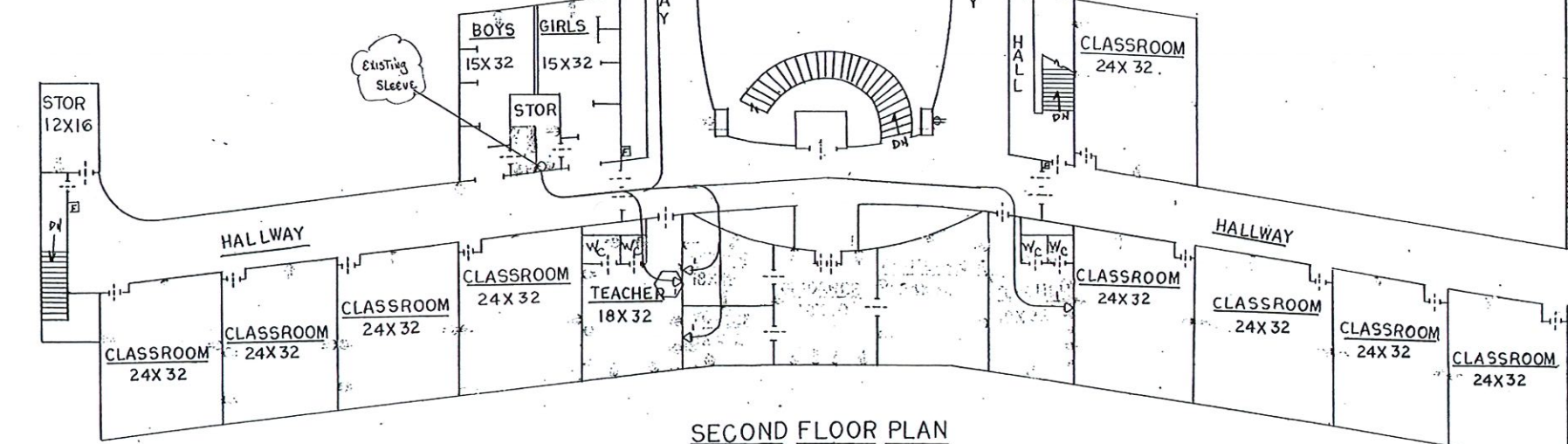
No.	DATE	REVISIONS	REMARKS	BY
REVISIONS				
DRAWN BY	DATE	BOARD OF EDUCATION OF THE MEMPHIS CITY SCHOOLS VOICE INSTALLATION		
APP'D BY				
APP'D BY				
APP'D BY				
APP'D BY				
APP'D BY				
SCALE	SHEET	SCHOOL	DRAWING NO.	
1/16=1'-0"	1 of 3	B.T. WASHINGTON HIGH	148-1	



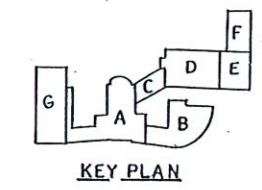
LOWER FLOOR PLAN
BUILDING C



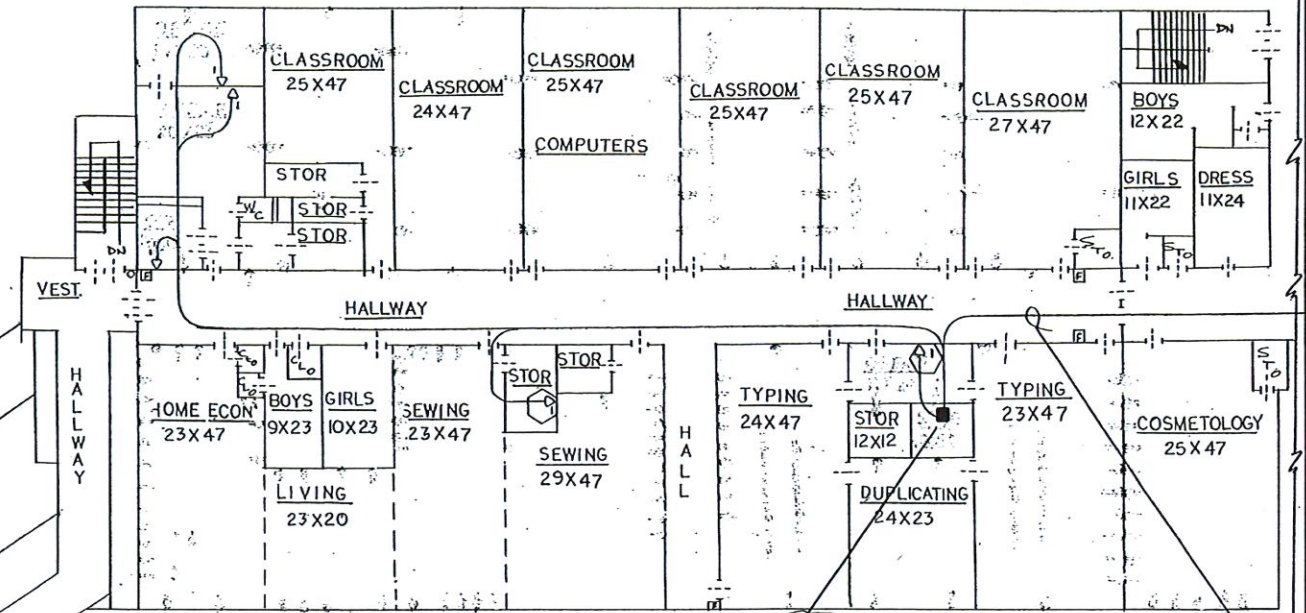
LIBRARY
86x49



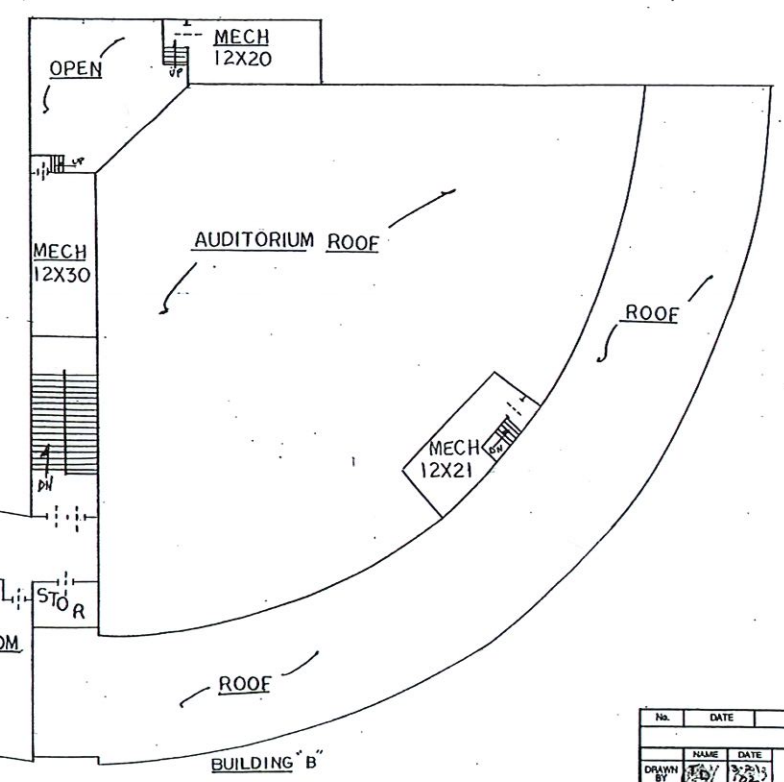
SECOND FLOOR PLAN
BUILDING A, B, C, D



KEY PLAN



BUILDING D



AUDITORIUM ROOF

No.	DATE	REVISIONS	BY
REVISIONS			
DRWN BY	3/27/72	DATE	3-27-72
BOARD OF EDUCATION OF THE MEMPHIS CITY SCHOOLS			
Voice Installation			
SCALE	1/16" = 10'	SHEET	2 OF 3
SCHOOL		B.T. WASHINGTON HIGH	
DRAWING NO.		V-148-1	